

## FEATURES:

- Architectural linear luminaire with direct lighting distribution.
- Light source: LED Strip or optional LED Tape.
- The diffuse illumination is provided by frosted opal lens.
- Available for row mounted application in various lengths.
- Suitable for suspended and surface mounted installations.
- Offered with integrated or remote driver.
- Aluminum body is available in white, black or grey finish.
- LED's are rated for 60,000hrs. L70 with +85CRI.
- Standard suspension length is 96 Inches.
- Custom modifications are available.
- ED luminaires are certified to CSA and UL standards.

## SPECIFICATION: ED VECTOR+

SIZE	SOURCE	VOLTAGE	DRIVER	MOUNTING	LENS	FINISH	CCT
___Feet*	5W/Ft LED	120V	ST - Standard	SS - Suspended	OP - Opal	WH - White	30K - 3000Kelvin
	7W/Ft LED	277V	DL - 0.10V Dimming	SF - Surface		BK - Black	35K - 3500Kelvin
		347V**	DM - Dimming***	WM - Wall Mount		GR - Grey	40K - 4000Kelvin
				RT - Recessed Trimless			

- \* Enter required length of the luminaire.
- \*\* Not available for all configurations.
- \*\*\* Please specify dimming requirements.

### EXAMPLES:

1. ED VECTOR+10Feet-7W/Ft LED-347V-ST-SF-OP-GR-30K
2. ED VECTOR+20Feet-5W/Ft LED-120V-ST-SS-OP-WH-40K

## LUMEN OUTPUT W/Ft:

Watts	30K	35K	40K
5W	485 lm	500 lm	515 lm
7W	680 lm	700 lm	720 lm

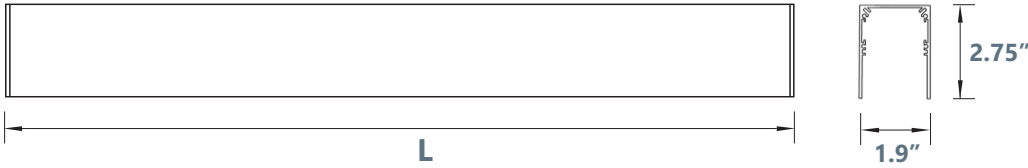
Project:

Type:

## Edison Lighting Group Ltd.

1303 Ringwell Dr. Unit #2, Newmarket, ON L3Y 8T9  
 Tel: 905-830-0339 or 1-800-667-9281 Fax: 905-898-6439 or 1-800-667-9302  
[www.edisonlighting.ca](http://www.edisonlighting.ca) [info@edisonlighting.ca](mailto:info@edisonlighting.ca)

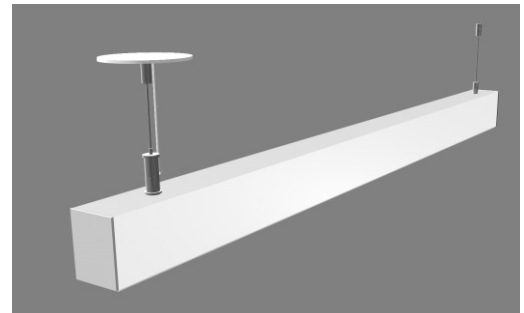
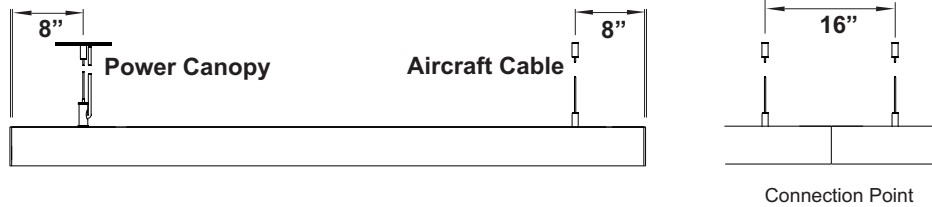
## SIZE:



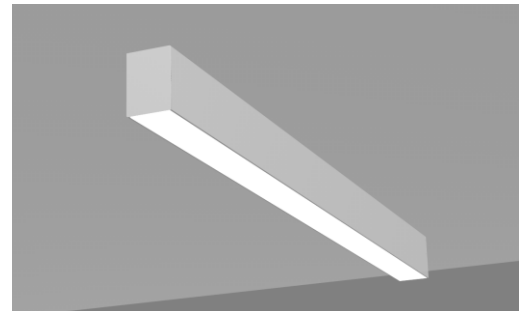
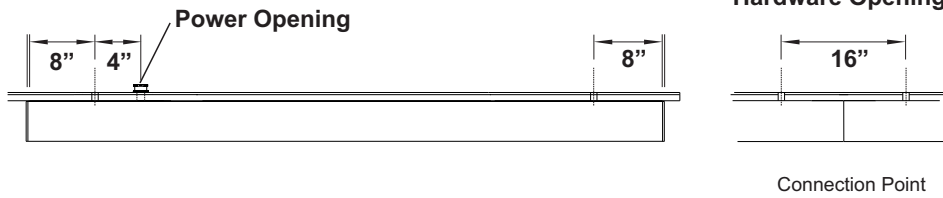
Size	L	LED strips
1 Feet	12"	1 X 11"
2 Feet	23"	1 X 22"
3 Feet	35"	3 X 11"
4 Feet	45 <sup>3/4</sup> "	2 x 22"
5 Feet	58"	5 X 11"
6 Feet	68"	3 X 22"
7 Feet	81"	7 X 11"
8 Feet	90 <sup>1/2</sup> "	4 X 22"

## MOUNTING:

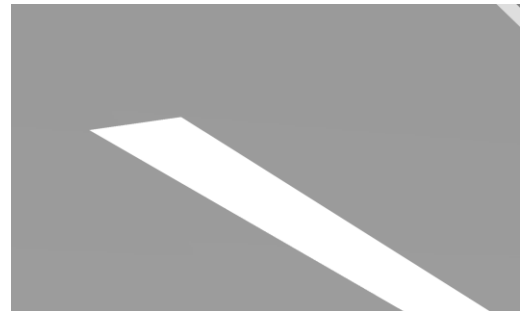
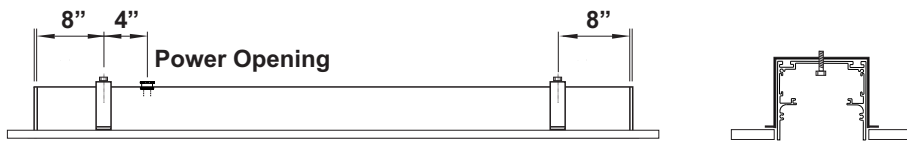
### Suspended



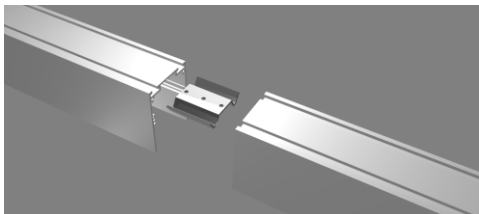
### Surface



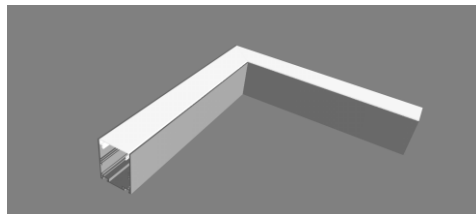
### Recessed Trimless



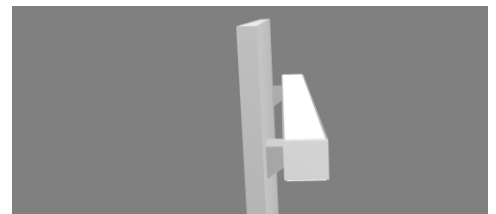
## Options



Connecting Bracket



90 Corner - Custom Angles are Available



Wall Mount

## Edison Lighting Group Ltd.

1303 Ringwell Dr. Unit #2, Newmarket, ON L3Y 8T9

Tel: 905-830-0339 or 1-800-667-9281 Fax: 905-898-6439 or 1-800-667-9302

www.edisonlighting.ca info@edisonlighting.ca

Specifications are subject to change without notice. Every effort has been made for accuracy, and errors are unintentional.