



FEATURES:

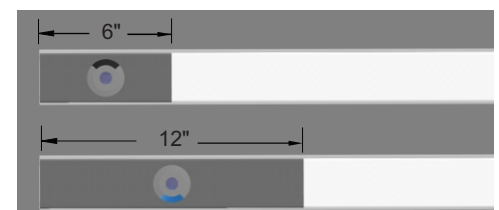
- Architectural linear luminaire with direct-indirect distribution.
- Light source: LED Strip with optional LED spot.
- The diffuse illumination is provided by frosted opal lens.
- Available for row mounted application in various lengths.
- Suitable for suspended and wall mounted installations.
- Extruded aluminum body is available in white or grey finish.
- LED Strips are rated for 60,000hrs. L70 with +85CRI.
- Standard suspension length is 96 Inches.
- Has a proven record in office, commercial and retail installations.
- Custom modifications are available.
- ED luminaires are certified to CSA and UL standards.

SPECIFICATION: ED VECTOR5+

SIZE	SOURCE	RADIANCE	VOLTAGE	DRIVER	MOUNTING	LENS	FINISH	CCT
___Feet*	5W/Ft LED	ED - Even**	120V	ST - Standard	SS - Suspended	OP - Opal	WH - White	30K - 3000Kelvin
	10W/Ft LED	UD - Uneven**	277V	DL - 0.10V Dimming	WM - Wall Mount	SP - Spot	BK - Black	35K - 3500Kelvin
	15W/Ft LED		347V***	DM - Dimming****		OS-Opal+Spot	GR - Grey	40K - 4000Kelvin

SPOT	INSERT	SOURCE
___pc.	6 Inch 12 Inch	1.5W LED 3W LED

LED Spot Insert



- * Enter required length of the luminaire.
- ** Light Distribution: Even 50%/50% or Uneven 70%/30%.
- *** Not available for all configurations.
- **** Please specify dimming requirements.

EXAMPLES:

1. ED VECTOR5+-22Feet-5W/Ft LED-ED-347V-ST-SF-OP-GR-30K
2. ED VECTOR5+-20Feet-10W/Ft LED-UD-120V-ST-SF-OS/2pc./12Inch/3WLED-WH-35K

LUMEN OUTPUT W/Ft:

Watts	30K	35K	40K
5W	535 lm	550 lm	565 lm
10W	1070 lm	1100 lm	1130 lm
15W	1610 lm	1650 lm	1690 lm

Project:

Type:

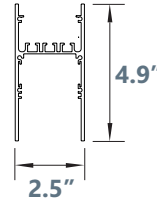
Edison Lighting Group Ltd.

1303 Ringwell Dr. Unit #2, Newmarket, ON L3Y 8T9

Tel: 905-830-0339 or 1-800-667-9281 Fax: 905-898-6439 or 1-800-667-9302

www.edisonlighting.ca info@edisonlighting.ca

SIZE:

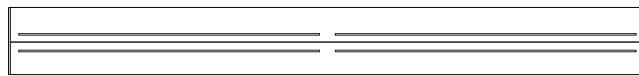


Size	L	LED strips
1 Feet	12"	1 X 11"
2 Feet	23"	1 X 22"
3 Feet	35"	3 X 11"
4 Feet	45 ^{3/4} "	2 X 22"
5 Feet	58"	5 X 11"
6 Feet	68"	3 X 22"
7 Feet	81"	7 X 11"
8 Feet	90 ^{1/2} "	4 X 22"

RADIANCE:

Even Distribution

50% ↑

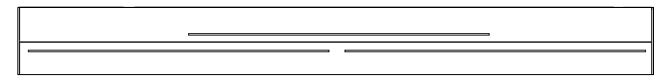


ED - 50%/50%

50% ↓

Uneven Distribution

30% ↑

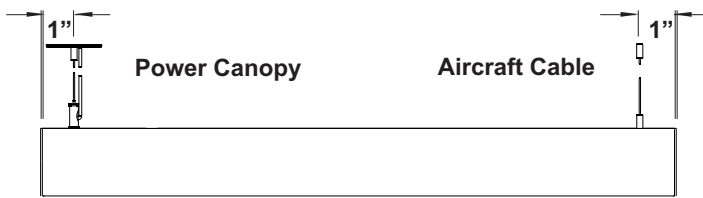


UD - 30%/70%

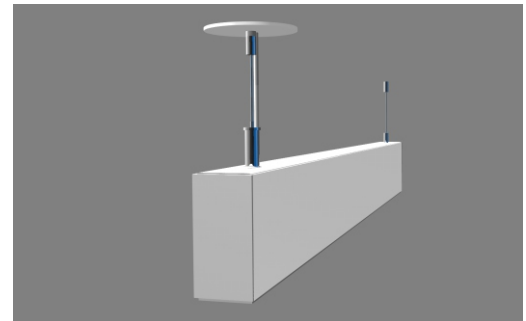
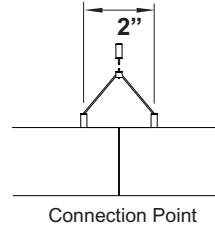
70% ↓

MOUNTING:

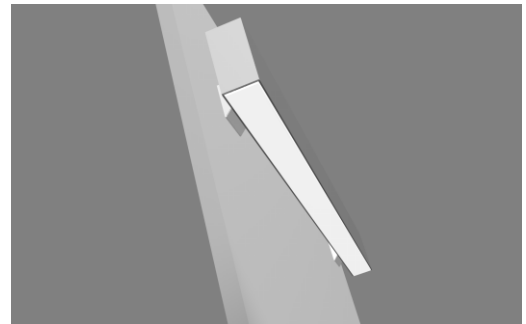
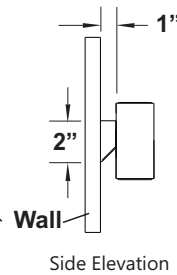
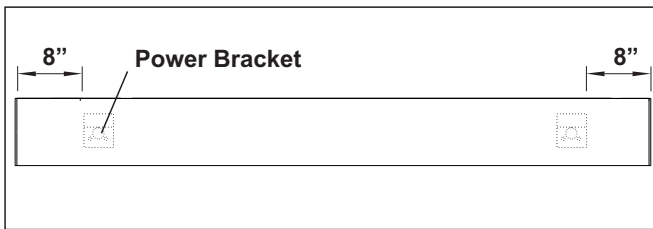
Suspended



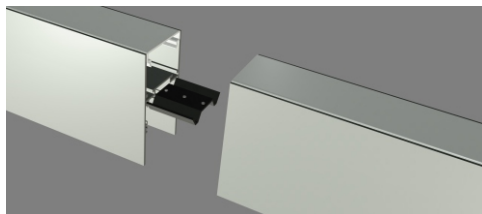
Aircraft Cable



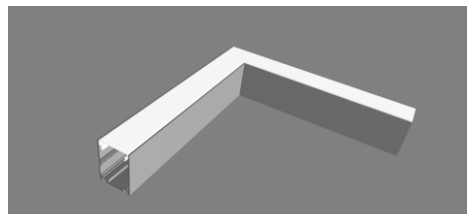
Wall Mount



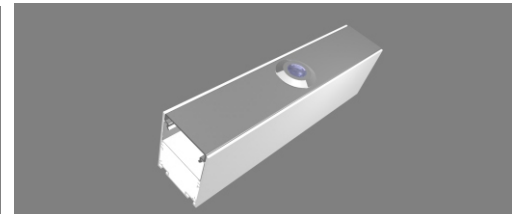
Options



Connecting Bracket



90° Corners - Custom Angles are Available



Spot Light

Edison Lighting Group Ltd.

1303 Ringwell Dr. Unit #2, Newmarket, ON L3Y 8T9

Tel: 905-830-0339 or 1-800-667-9281 Fax: 905-898-6439 or 1-800-667-9302

www.edisonlighting.ca info@edisonlighting.ca