



## FEATURES:

- Architectural luminaire with direct lighting distribution.
- Light source: LED Strip with optional LED Spot.
- The diffuse illumination is provided by frosted opal lens.
- Available for row mounted installations in various lengths.
- Suitable for suspended, surface and wall mounted installations.
- Extruded aluminum body is available in white or grey finish.
- LED Strips are rated for 60,000hrs. L70 and +85CRI.
- Standard suspension length is 96 Inches.
- Has a proven record in office, commercial and retail installations.
- Custom modifications are available.
- ED luminaires are certified to CSA and UL standards.

## SPECIFICATION: ED VECTOR1+

SIZE	SOURCE	VOLTAGE	DRIVER	MOUNTING	LENS	FINISH	CCT
___Feet*	5W/Ft LED	120V	ST - Standard	SS - Suspended	OP - Opal	WH - White	30K - 3000Kelvin
	7W/Ft LED	277V	DL - 0.10V Dimming	SF - Surface	SP - Spot	GR - Grey	35K - 3500Kelvin
	10W/Ft LED	347V**	DM - Dimming***	WM - Wall Mount	OS-Opal+Spot		40K - 4000Kelvin

SPOT	INSERT	SOURCE
___pc.	6 Inch 12 Inch	1.5W LED 3W LED

- \* Enter required length of the luminaire.
- \*\* Not available for all configurations.
- \*\*\* Please specify dimming requirements.

### LED Spot Insert



### EXAMPLES:

1. ED VECTOR1+-22Feet-7W/Ft LED-347V-ST-SF-OP-GR-30K
2. ED VECTOR1+-20Feet-10W/Ft LED-120V-ST-SF-OS/2pc./12Inch/3WLED-WH-35K

## LUMEN OUTPUT W/Ft:

Watts	30K	35K	40K
5W	535 lm	550 lm	565 lm
7W	750 lm	770 lm	790 lm
10W	1070 lm	1100 lm	1130 lm

Project:

Type:

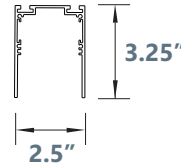
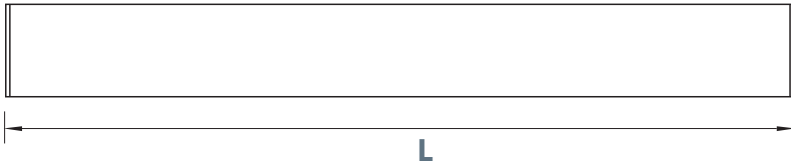
## Edison Lighting Group Ltd.

1303 Ringwell Dr. Unit #2, Newmarket, ON L3Y 8T9

Tel: 905-830-0339 or 1-800-667-9281 Fax: 905-898-6439 or 1-800-667-9302

www.edisonlighting.ca info@edisonlighting.ca

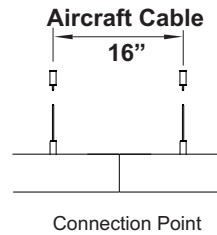
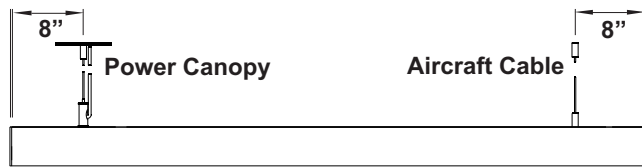
## SIZE:



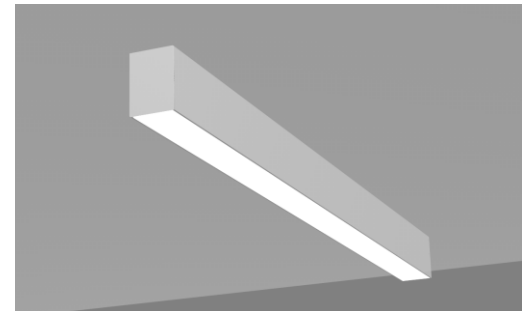
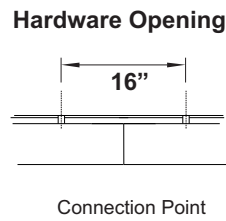
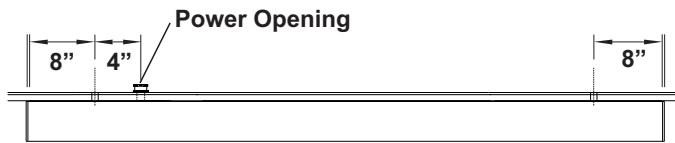
Size	L	LED strips
1 Feet	12"	1 X 11"
2 Feet	23"	1 X 22"
3 Feet	35"	3 X 11"
4 Feet	45 <sup>3/4</sup> "	2 X 22"
5 Feet	58"	5 X 11"
6 Feet	68"	3 X 22"
7 Feet	81"	7 X 11"
8 Feet	90 <sup>1/2</sup> "	4 X 22"

## MOUNTING:

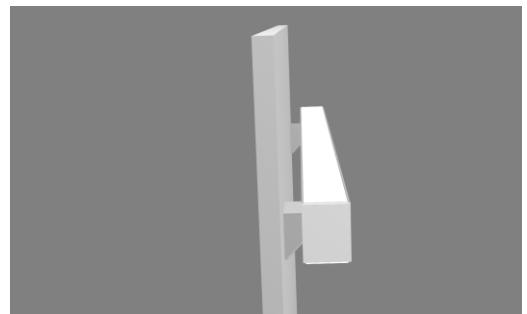
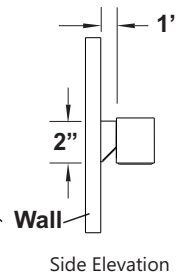
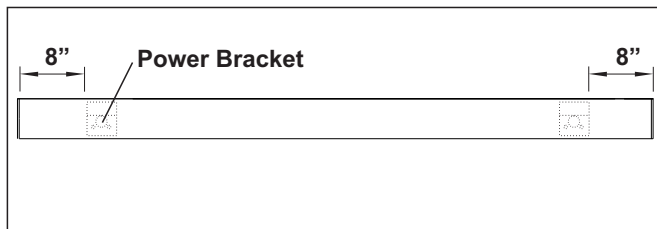
### Suspended



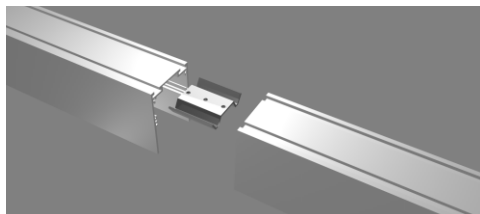
### Surface



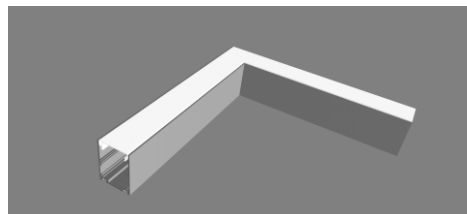
### Wall Mount



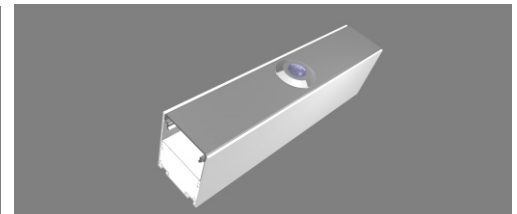
## Options



Connecting Bracket



90° Corner - Custom Angles are Available



Spot Light

## Edison Lighting Group Ltd.

1303 Ringwell Dr. Unit #2, Newmarket, ON L3Y 8T9

Tel: 905-830-0339 or 1-800-667-9281 Fax: 905-898-6439 or 1-800-667-9302

www.edisonlighting.ca info@edisonlighting.ca

Specifications are subject to change without notice. Every effort has been made for accuracy, and errors are unintentional.